



MALONE AUTORACKS
Removable Towing Tongue Kit Model 48846
For Micro Sport Trailer
Installation and Use Instructions

Take a few minutes now and read thru these instructions to familiarize yourself with the process.

Visit us at
maloneautoracks.com
for more fine products and accessories.

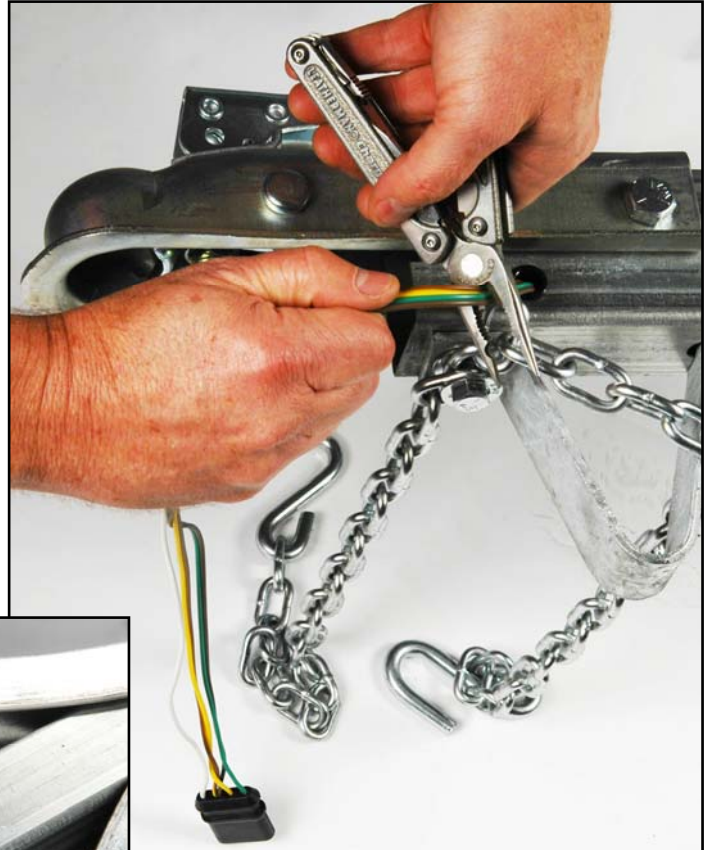
Required Tools

Before you can begin assembling you must have the following tools:

- (2) 9/16" wrenches (one 9/16" deep socket is very handy)
- (2) 3/4" wrenches
- Wire cutter
- Pliers



- 1) Cut the existing wiring harness off where it exits the tongue at the coupler. Cut the white ground wire off flush where it enters the black plug. Set the plug safely to the side. We will use it later.



- 2) Cut the existing wiring harness where it exits the back end of the tongue. Pull out and discard the wire inside the tongue.



- 3) Remove the three 1/2" bolts securing the tongue to the frame rails as shown.

- 4) Slightly loosen the four 9/16" carriage bolts that hold the tongue end support to the frame rails. This relieves the pinch on the tongue so you can pull it out of the frame.
- 5) Pull the tongue out of the frame as shown.



- 6) Slide the new tongue filler provided in the kit back in where the tongue just came out. (shown here already in place)

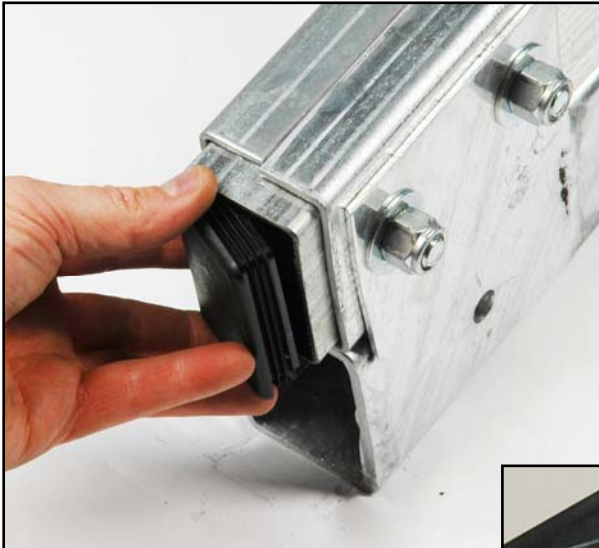
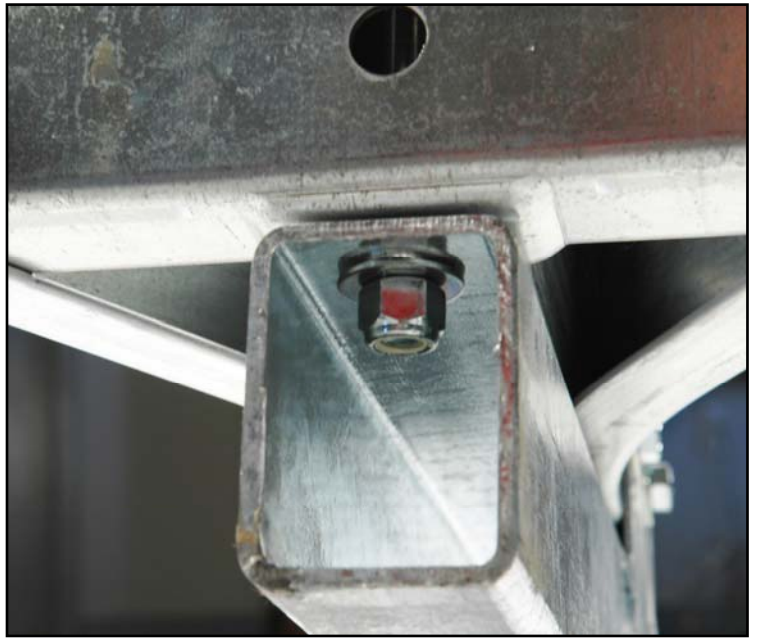


- 7) Before you mount the tongue receiver you have a decision to make (see photos on page 8)

Trailers just tow better when their frame is parallel with the ground. If your tow vehicle hitch ball is close to 12" high (most cars), you will want to mount the tongue receiver LOW, under the frame. If your hitch ball is close to 24" high (most trucks), you will want to mount the tongue receiver HIGH, on top of the frame.

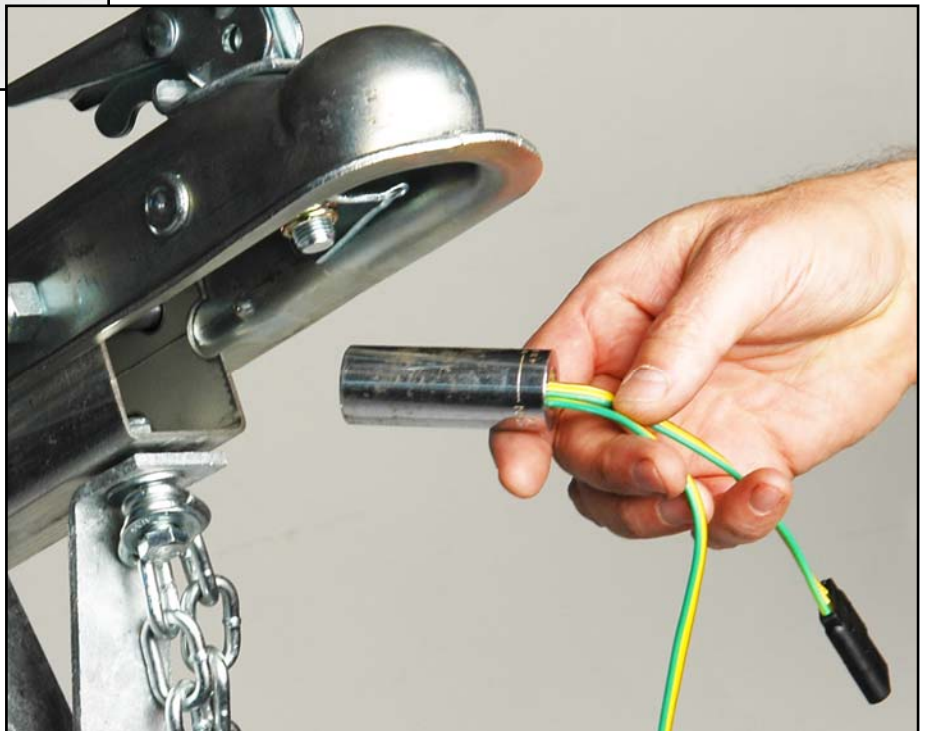
Don't worry, if you change your mind down the road it's not a problem to flip the receiver over later.

- 8) Mount the receiver to the frame using the same 1/2" bolts that you removed earlier holding the tongue. Note that on the rear bolt, regardless if the receiver is mounted HIGH or LOW (shown LOW), the nut and washer always goes inside the receiver tube.
- 9) Tighten the three 1/2" tongue bolts and the four 9/16" tongue support bolts securely.

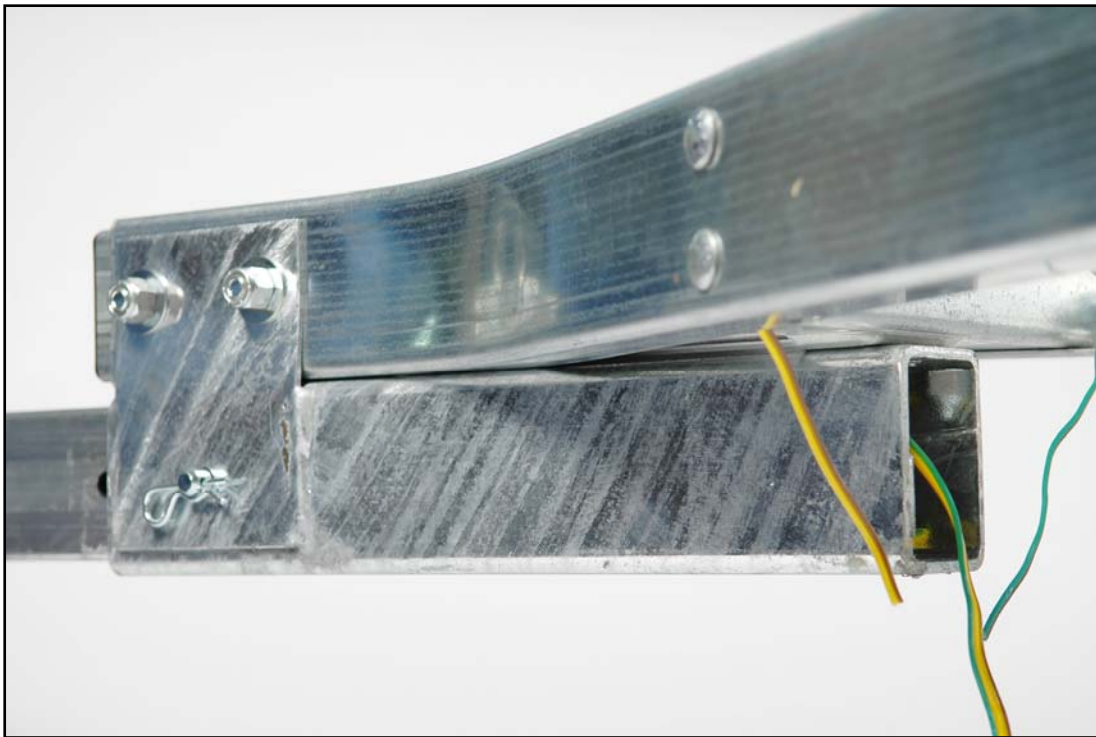
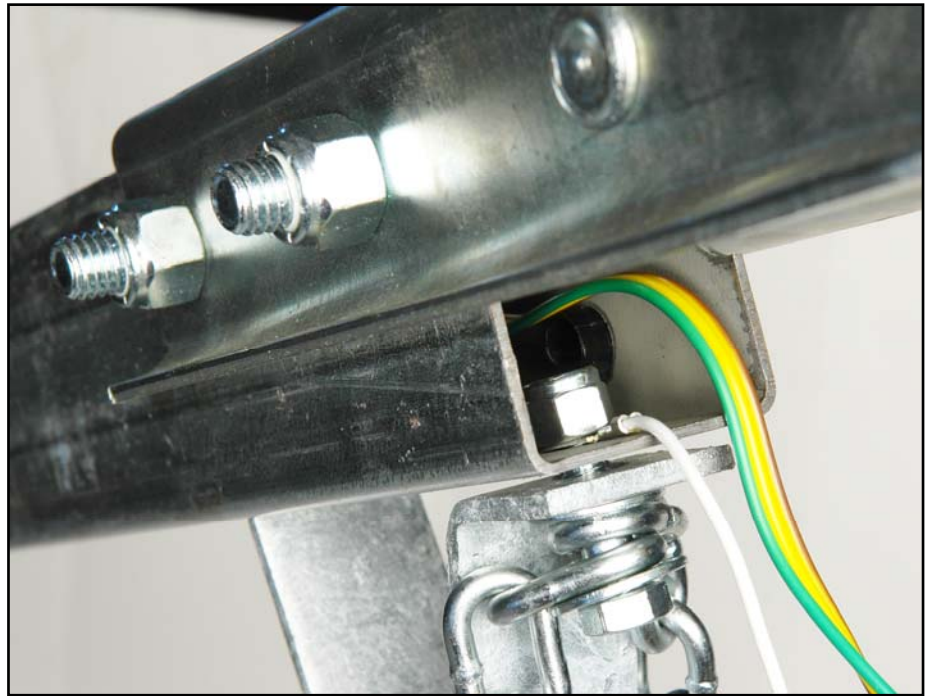


- 10) Install the tube end plug.

- 11) To install the new double ended wiring harness in the tongue, first, take the end of the harness WITHOUT the white ground wire and fold the wire over once as shown and insert it into the square end of a large heavy socket. Tip the tongue up and let the weight of the large socket pull the harness down and thru the tongue.



- 12) Remove the safety chain bolt and remove the old white wire and its ring connector. Install the new white wire ring connector onto the safety chain bolt and tighten, turning the bolt and holding the nut stationary so not to spin the wire connector.

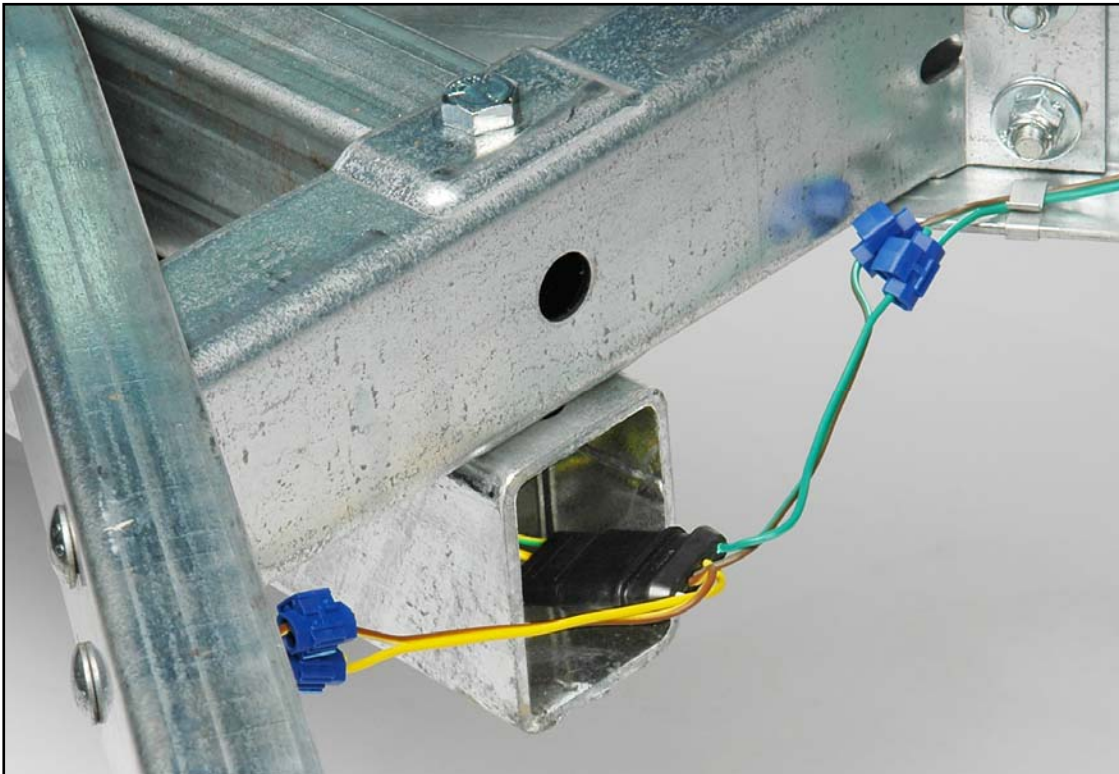


- 13) Remove the socket from the end of the harness, tuck the harness safely inside the end of the tongue.
- 14) Slide the tongue into the receiver until the first hole in the tongue aligns with the hole in the receiver.

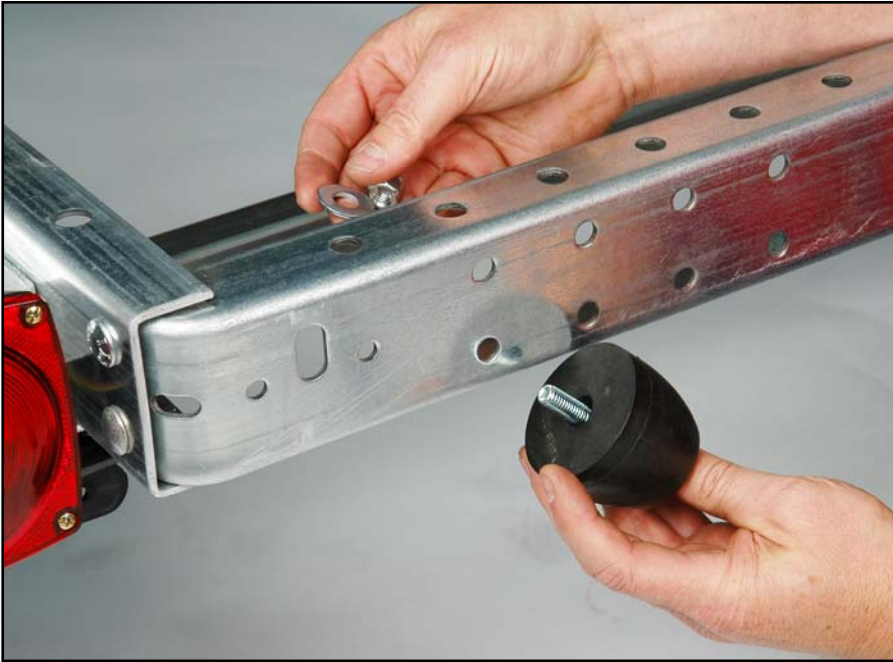
- 15) Insert the 1/2" pin thru the receiver and the tongue. Then install the safety clip thru the 1/2" pin on the opposite side.
- 16) Reach into the rear of the tongue and pull out the connector that you tucked in earlier. Note each time you remove or install the tongue it's a good idea to tuck the end of the harness so it can't get damaged.

- 17) You will now be using the wiring harness plug you cut from the tongue earlier. Trim wire similarly to what's shown below, then using the quick connectors provided; make 4 connections, **(connect same color wire to same color wire).**

Insert each wire all the way into the connector making sure each is past the metal blade. Then squeeze with pliers to press the blade thru the wire insulation making the connection. Fold over the locking flap.



- 18) Plug the connector into the wiring harness and tuck any excess harness length inside the tongue as shown.



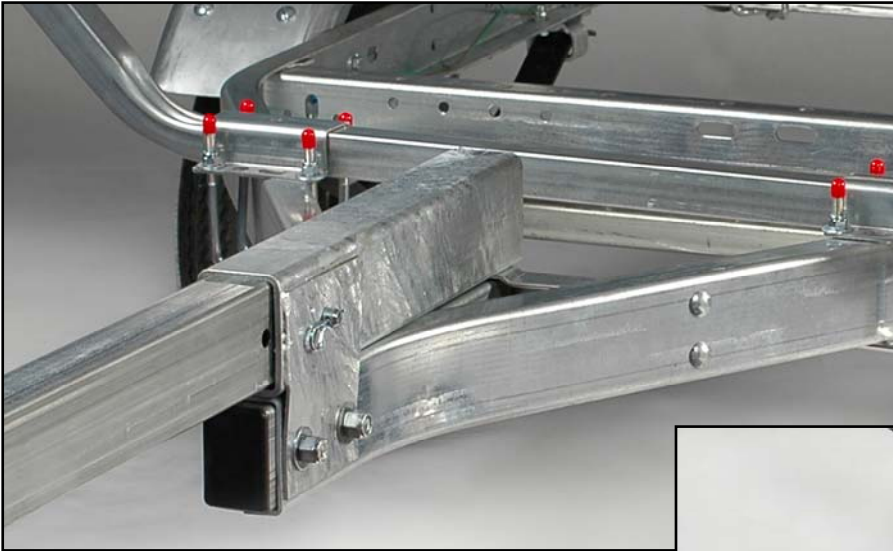
- 19) Install the two rubber feet onto the rear frame cross member. Use the left and right most hole along the bottom edge (left side shown). Install with the nuts to the inside of the frame. Its rubber so tighten snug only.

Shown here is a trailer with a completed removable tongue kit installed standing on its end, out of the way, against a garage wall.

NOTE in this photo the tires are just under 3 feet out from the wall. To gain even more garage space you could remove the tires. Then the standing stored trailer takes only 27 inches of space from the wall.



EXAMPLE PHOTOS OF A COMPLETED REMOVABLE TONGUE KIT



HIGH receiver mounting



Receiver only



LOW receiver mounting